



NEXA COLLECTIONS

100% PHENOLIC BONDED LINER LAMINATES



NEXA COLLECTIONS

100% PHENOLIC BONDED LINER LAMINATES



ISO 9001, 14001 & 45001 CERTIFIED COMPANY PRODUCTS



ADVANCE DECORATIVE LAMINATES
(An ISO 9001 ISO 14001 & ISO 45001 Certified Company)

Email: info@advancelam.com
www.advancelam.com

Tollfree 1800 103 4740
Mon to Sat , 10-7pm IST



+91 88000 91181


ADVANCE[®]
DECORATIVE LAMINATES


DECORATING





QUOTES AND SAYINGS

Scan the QR code and watch the videos



**RASHMI
DESAI**

I will suggest that every shop should have the Advance laminate folder. There is nothing better than this. Amazing Advance, well done.



**SHISHIR
SHARMA**

Advance laminate ko India ke 50000 carpenters, 20000 se jyada Architects, ka bharosa prapt hai aur ise pure bharat mein 40000 se jyada retailers pure bharse ke sath recommend karte hai. Use Advance laminate for your interior.



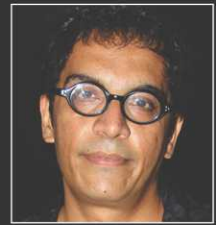
**BRIJENDRA
KALA**

Advance laminate ka folder dekhane ke baad mai toh advance laminate ka fan ho gaya. Maine jisko bhi suggest kiya wo ab mujhe actor ke sath sath interior design expert samajhata hai.



**MAHESH
THAKUR**

Advance laminate ka folder dekhne ke baad bhai mai toh iska diwana ho gaya. Ek se badhaker ek khoobsurat designs, Aap ye nahi kah sakte ki mujhe aisa design ya colour chahiye aue advance laminate ke paas na ho.



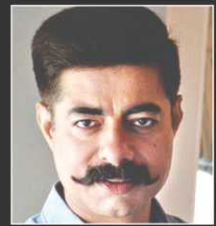
**VRAJESH
HIRJEE**

Advance laminate ke sheds Khoobsurat se bhi jyada khoobsurat hai, advance laminate ki quality behtar se bhi jyada behatareen hai aur advance laminate ki survice bharse se bhi jyada bharsemand hai.



**RAKESH
BEDI**

Ghar ke furniture ke liye jab laminate select karna ho toh khud se select karo aur sirf aur sirf advance laminate ke folder se hi karana, kyu ki fark tho padata hai jab ghar mein advance laminate lagta hai.



**SUSHANT
SINGH**

Ye dekhker sachmuch aashcharya hota hai ki ek brand ke ander itani sari variety kaise ho sakti hai. Advance laminate aur isase jude sabhi logon ko salute kerne ko ji karta hai.



**ANANG
DESAI**

Ek baat toh manani padegi ki advance laminate ke paas India ka best laminate collection hai. Mai toh chahuga ki her dukandar k apane customer ko Advance laminate hi suggest kare.



**KIKU
SHARDA**

Advance laminate ka folder mangwaiye aur dher sare mica collection mein se chun lijiye apana manpasand shed kyunki fark toh padata hai jab ghar mein advance laminate lagta hai.



**NEERAJ
MADHAV** (The Family Man)

Advance laminate se behtar brand aapke liye shayad hi koi hoga. Itani badi product range hone ke saath saath Advance laminate ke paas 500 se leker 5000 tak ki mica available hai.



**RAJENDRA
CHAWLA**

Aaj Advance laminate apane design papers ko Japan, spain, Germany, Belgium jaise countries se import ker raha hai. Apne sabhi decorative collection ko 100% phenolic resin se bana raha hai.



PRIYAMANI
(The Family Man)

Aapke furniture ko expensive aur royal look dene ka secret batau? Apne ghar ke furniture per advance laminate lagao. Kya shandar shed hai ye. Must go for advance laminate if you love your interior.



**ANANT
MAHADEVAN**

Aaj ke daur mein jab hum mica ki baat karte hai to dimag mein sirf ek hi naam aata hai aur wo hai Advance laminate. Kyunki fark toh padta hai jab ghar mein advance laminate lagata hai.



UDAY MAHESH
(The Family Man)

Advance laminate apna her product extensive market research ke baad ki market mein lata hai aur isiliye advance laminate ka her product market mein pasand kiya jata hai.



**MAHIMA
CHAUDHRY**

Apne customers ko agar kuch special dena ho ya unko better than the best dena ho toh koi advance laminate se sikhe. Advance laminate ka folder interior ke liye ek gift se kum nahi lagta.



**SAUMYA
TANDON** (TV Actress)

advance laminate aapke paise ki value ko janta hai, isiliye best quality product deta hai. Thora costly toh jaroor hai magar aap iski quality ko dekhe toh dusaro se sasta hi lagata hai.



**SHUBHANGI
ATRE**

Advance laminate ne apne product ko behtar banane ke liye manufacturing ki her choti- choti barikiyon per imandari se kam karta hai. Chaha wo macheries ho ya raw materials, advance laminate herdam better than the best ke sidhant per kaam kerta hai.



ANUP SONI
(TV Actor)

Yaar jab se maine apne ghar mein advance laminate lagaya hai , her koi bas mere interior ki hi baat karta hai. Ab Advance laminate ke shed hai hi itane behatareen. Aap bji lagao phir fark dikhega



**KIRAN
KUMAR**

Agar aapko ye lagata hai ki advance laminate thora costly hai to aap bilkul galat hai, kyunki agar koi 100% full thickness dega aur 100% phenol se mica banayega toh dusare brand se thora mahaga toh hoga hi. Advance apanaiye aur tension free ho jaiye.



**ISHA
KOPPIKAR** (Film Actress)

Mai toh sach mein Advance laminate ki fan ho gayi hun aur aapko bhi salah deti hu ki aap bhi apane ghar ke furniture advance laminate se banawaiye, kyu ki fark padata hai jab ghar mein Advance laminate lagata hai.

The Best

ABOUT US...

Dear customer, it's our privilege that you have selected advance laminates for your surface decoration requirement. We have over 350 options in various finishes for your residential and commercial spaces be it your drawing room, bedroom, kitchen, wardrobe, office or showroom, we have everything for all needs, Utmost care has been provided while manufacturing these laminates because we care for the emotion of person while selecting the designs for their needs. This presentation also has QR codes given with each design if you wish to see the full sheet view of any design. Also we have given an application book that will help you while selection of the designs according to a particular application.

Advance decorative laminate is India's most favorite brand which has been serving the panel trade since 1991. Our manufacturing facility which is spread across 25 acres is located in HAPUR, 30kms east to the national capital, Delhi. The factory is equipped with state of the art machinery majorly imported from Europe. The designs films are sourced from different parts of the globe namely ITALY, KOREA, JAPAN and UNITED STATE. We can truly say we bring the best of the world to India and also push forward the make in India initiative. We have been awarded with ISO 9001:14001 and 45001 certifications where we are committed to comply to world's best standards of quality control, safety of our people and also keeping our environment clean and future safe. We have also been awarded CEMARK, FSC and IGBC which enables us to go about our business while keeping nature protected. we currently have presence on more than 40,000 retail outlets, spread across India, We truly believe in the concept of better than before and consciously strive to improve everything we do.

Happy designing!

SEARCH ANY WHERE EVERYWHERE FIND

DEALERS
44613+

STATES
21

CARPENTERS RECOMMENDATION
65784+

ARCHITECTS INTERIOR DESIGNERS
24340+

USED SHEETS
50 MILLION+
BY CONSUMERS TILL 31st MARCH 2022

DISTRIBUTORS
107+

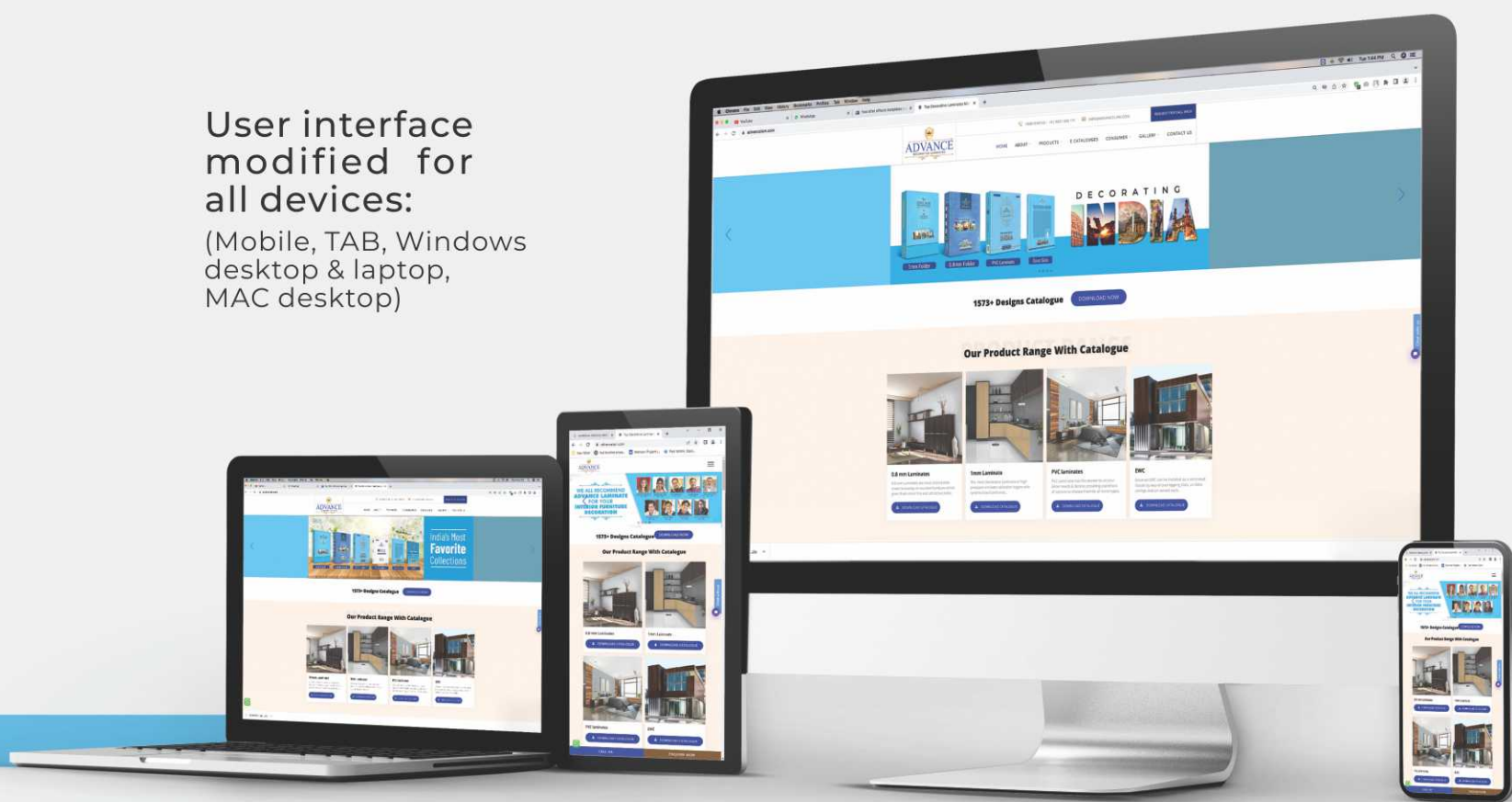
visit

www.advancelam.com

Your favorite brand is now supported with world class website



User interface modified for all devices:
(Mobile, TAB, Windows desktop & laptop, MAC desktop)



- 1000+ of interior design applications according to your needs
- Visualizer for interior
- Full figures, 8x4ft, of each laminate
- Personalized consultation if you want us to help you in your laminate selection
- All catalogue download
- Answer to all your FAQ'S,
- Contact of nearest dealers to suit your requirement,

The Frame of our Quality & Service

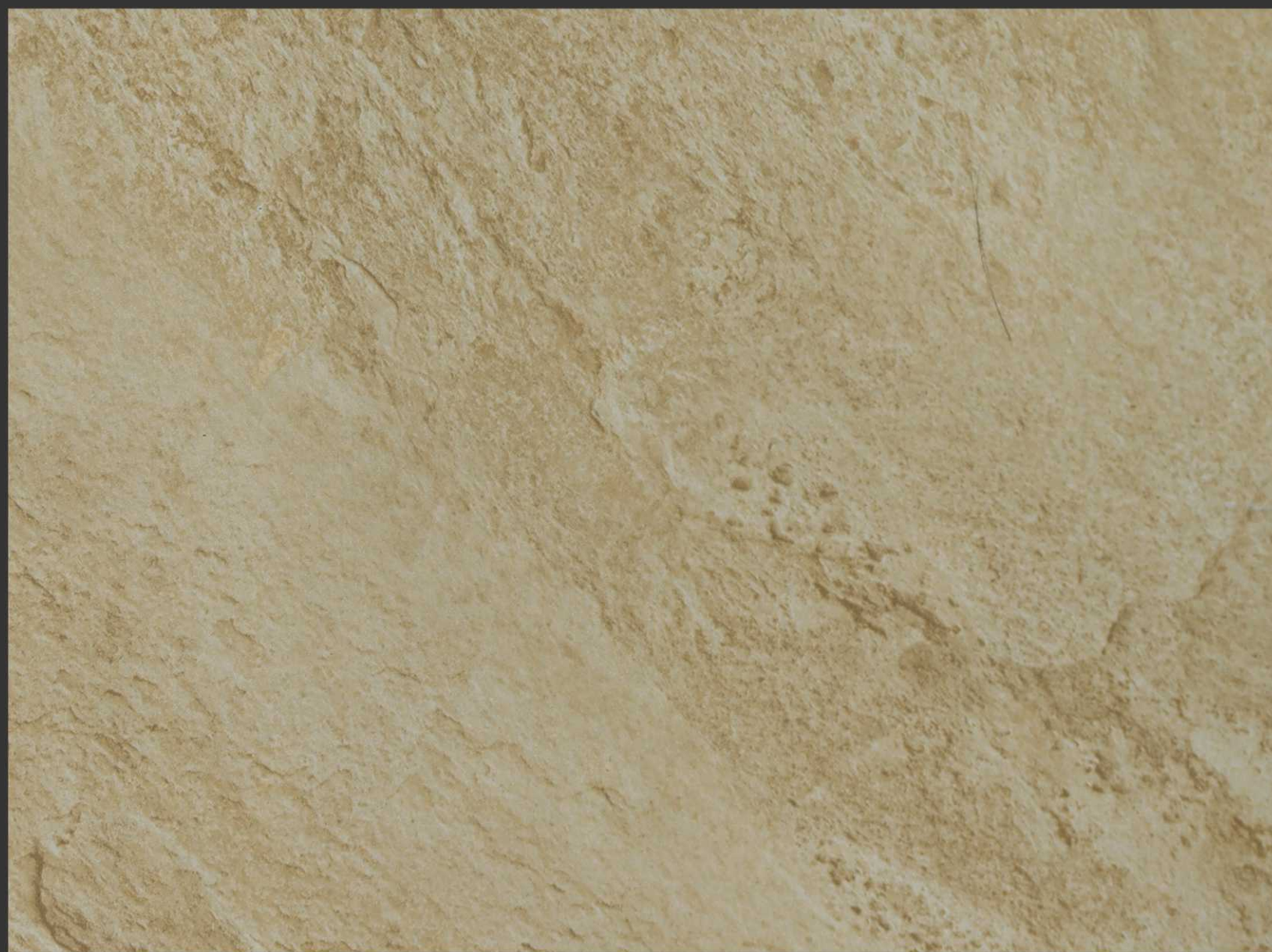


STONE SERIES 800

Let's design a wardrobe with complete marble look... >>



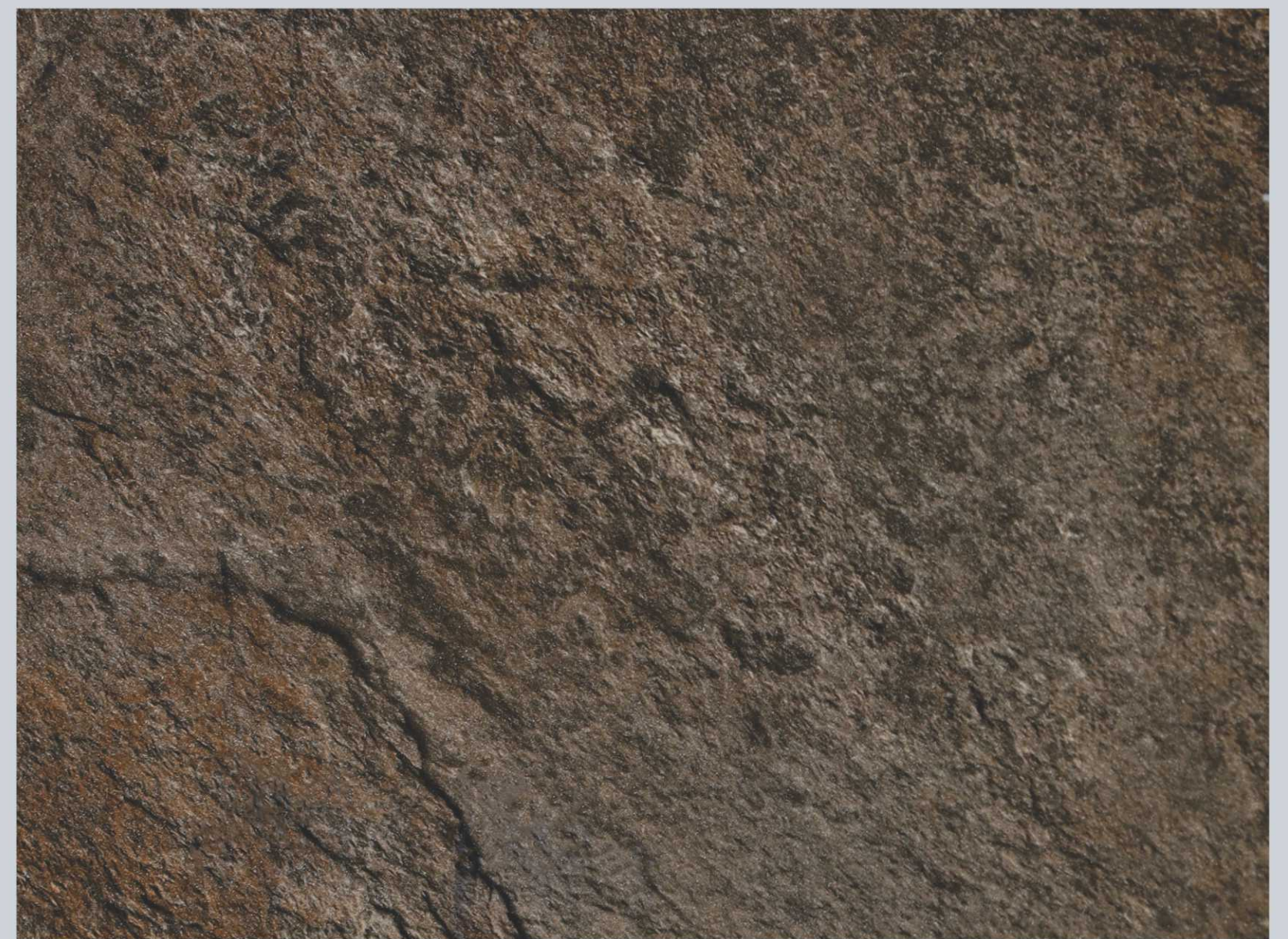
A 801 | TURKISH MARBLE
B 802 | DARK TURKISH MARBLE



801 | TURKISH MARBLE



AVAILABLE : FINISH (GL, MT) | THICKNESS : 0.72, 0.82 & 0.92 MM



802 | DARK TURKISH MARBLE



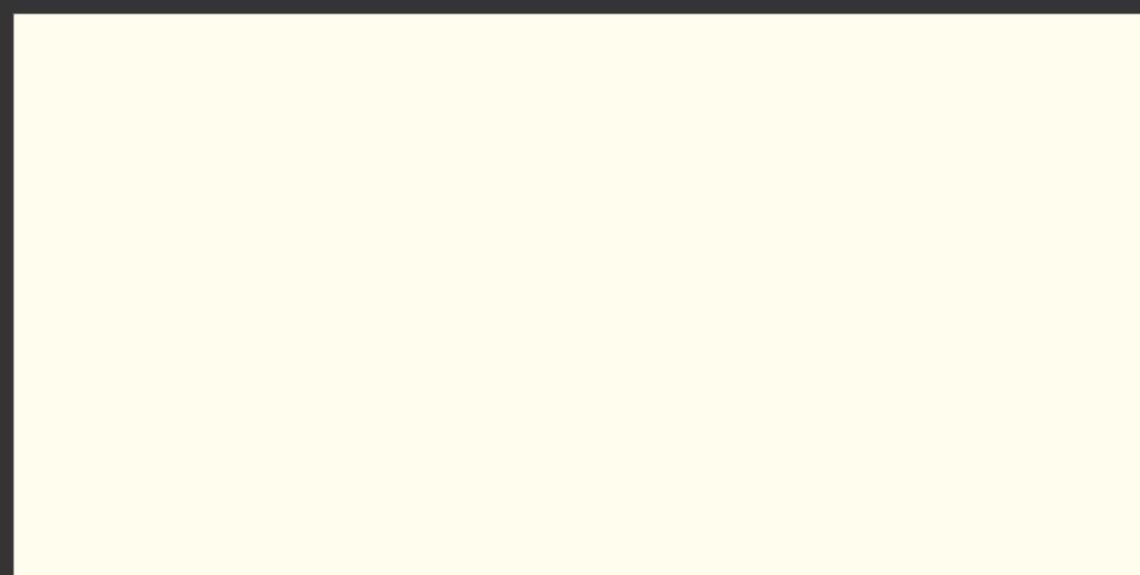
AVAILABLE : FINISH (GL, MT) | THICKNESS : 0.72, 0.82 & 0.92 MM

SOLIDS SERIES 700

An wardrobe, designed with OFF WHITE and wooden BUCOLIC OAK. It look beautiful when solid color is combined with wooden in inside.



716 | WHITE



717 | OFF WHITE



718 | GREY



A 718 | GREY B 813 | BUCOLIC OAK PG. 21

FABRIC SERIES

A beautiful gray wardrobe designed with Gray fabric and gray wooden shed...



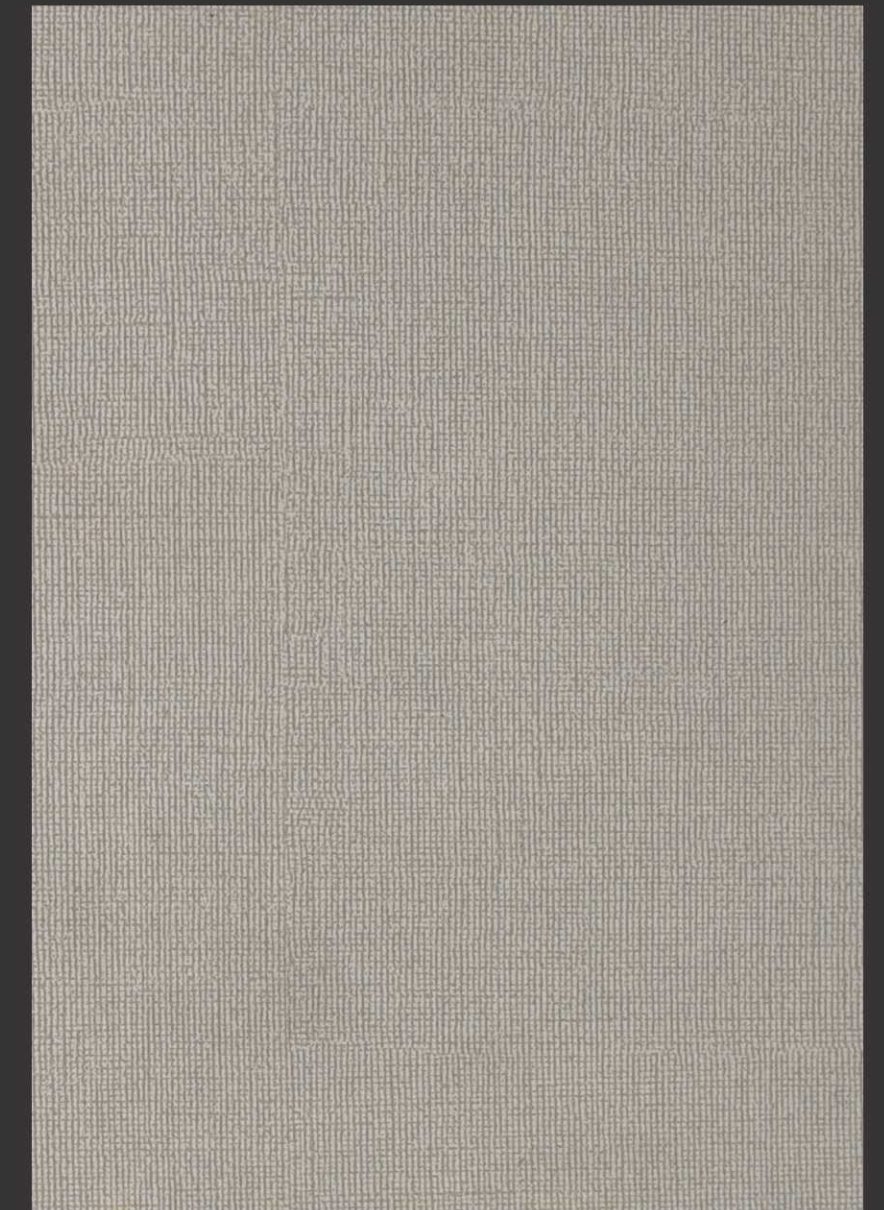
A 713 | SANDY CROSS LINE

B 809 | GAIN T WOOD PG. 25

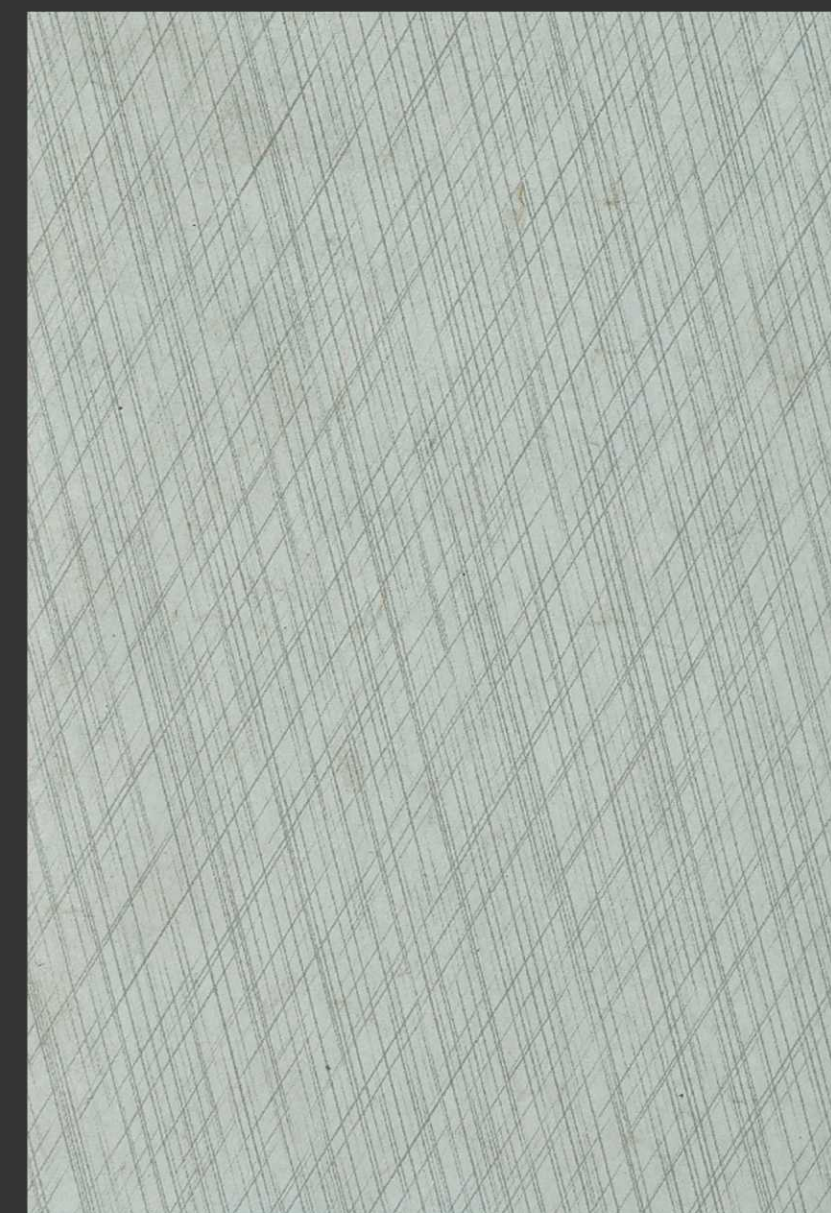
SERIES : 700



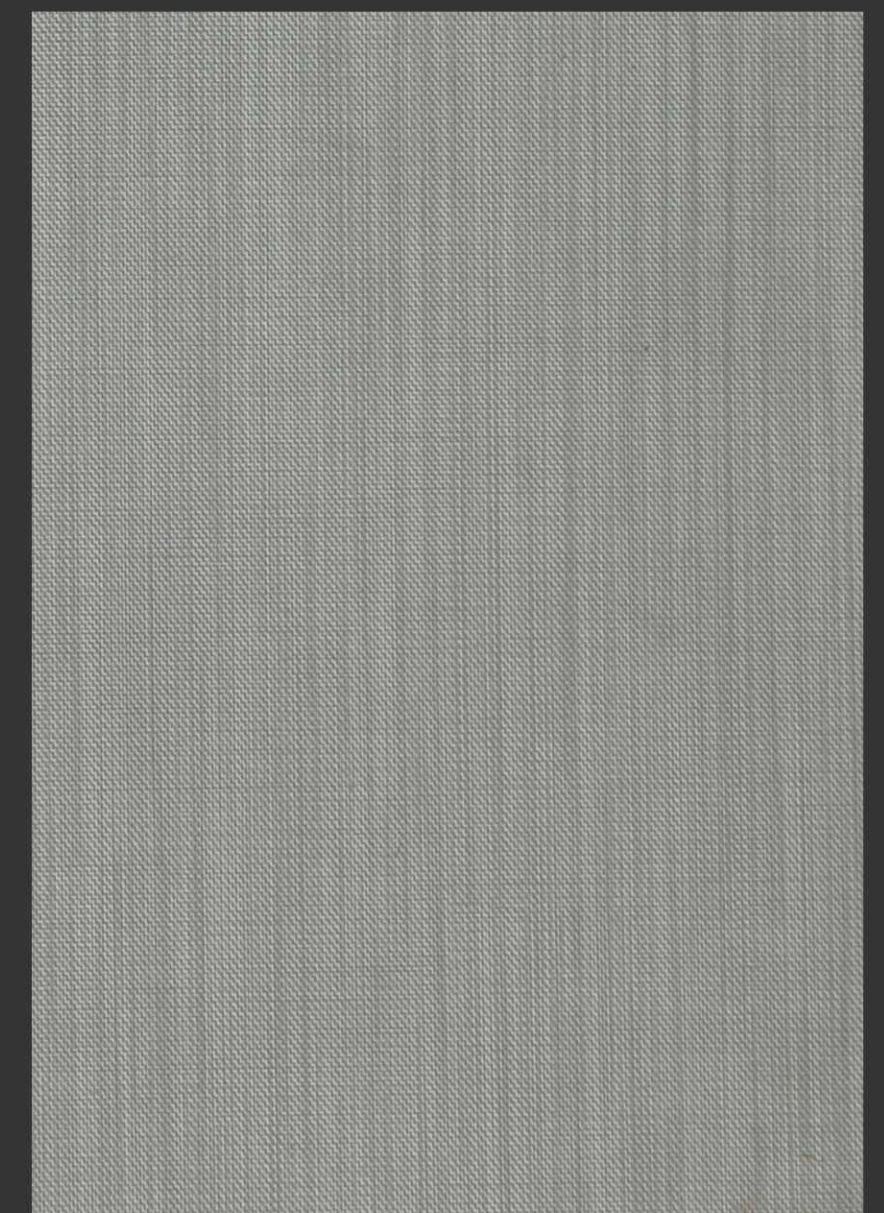
701 | TWIST FABRIC



703 | PENCIL FABRIC



713 | SANDY CROSS LINE



702 | BLENDED FABRIC



AVAILABLE : FINISH (GL, MT, SF) | THICKNESS : 0.72, 0.82 & 0.92 MM

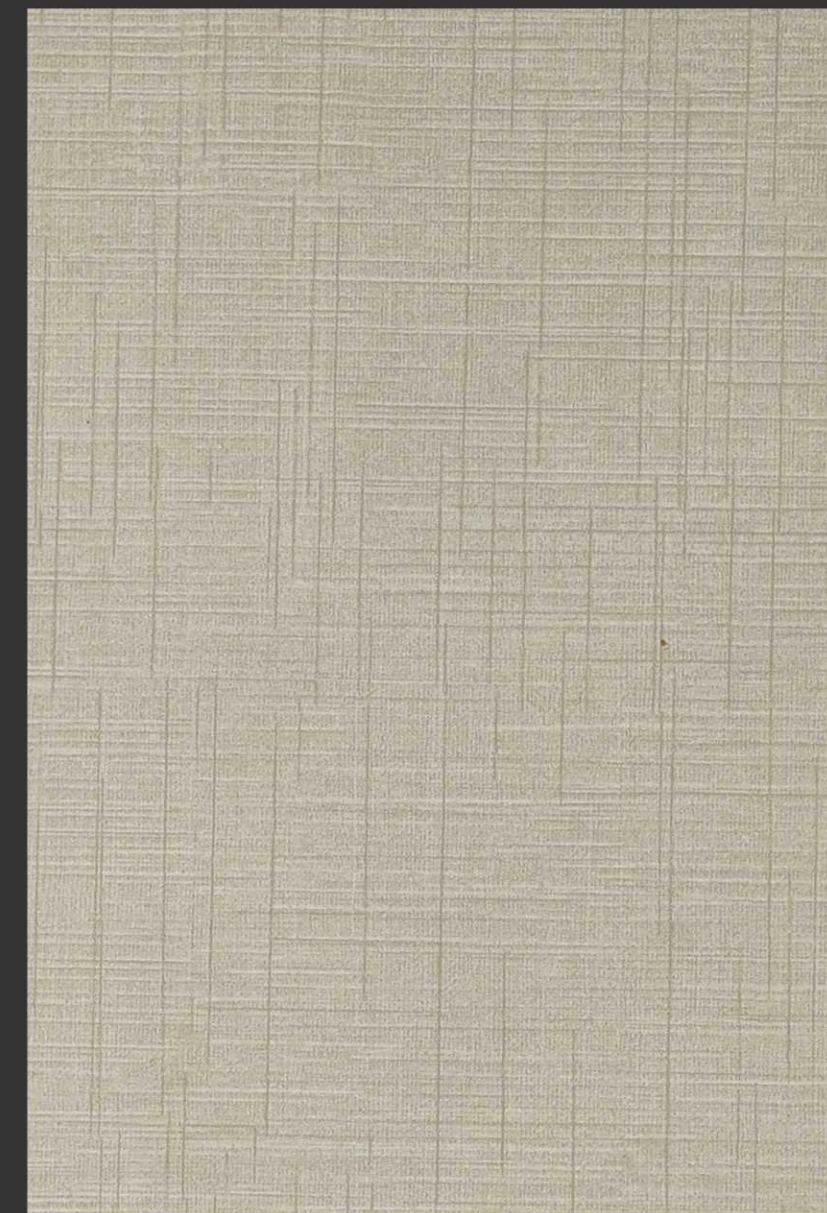
FABRIC SERIES



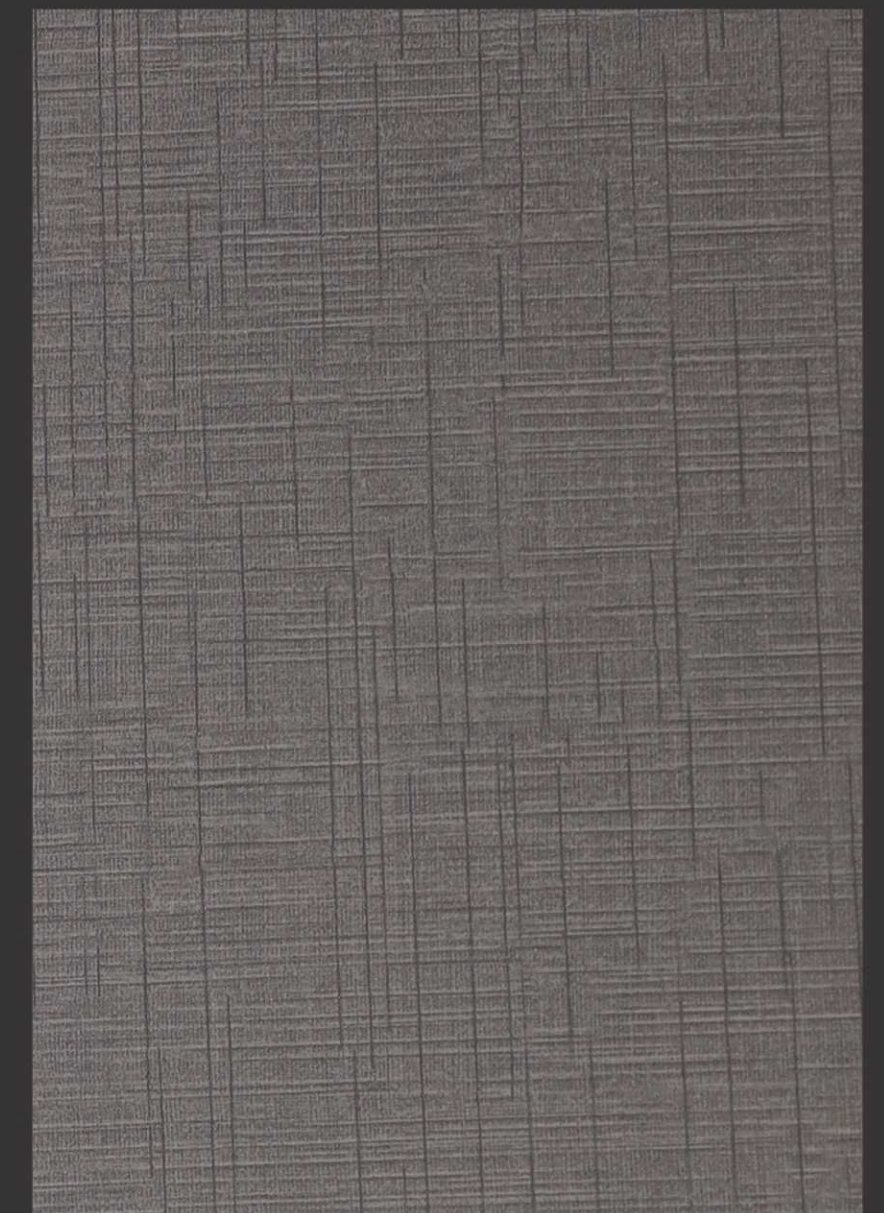
A 708 | COTTON FABRIC

B 709 | DARK COTTON FABRIC

SERIES : 700



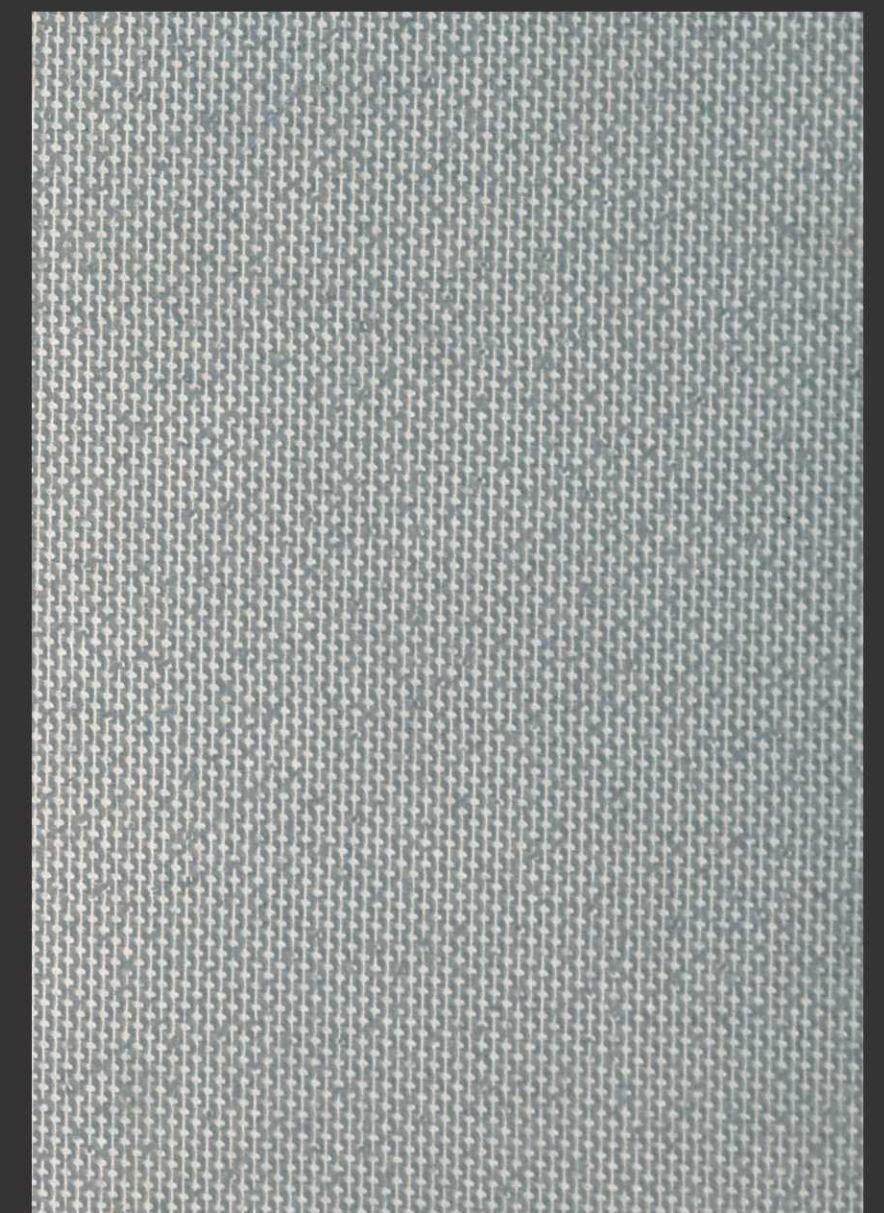
708 | COTTON FABRIC



709 | DARK COTTON FABRIC



711 | TAVIRA FABRIC



710 | GREY TAVIRA FABRIC



FABRIC SERIES 700



110X160MM



- A** 705 | LINEN FABRIC
- B** 806 | STEEM BEECH PG. 24

715 | CROSS LINE FABRIC



706 | DARK MESH FABRIC



704 | NATURAL LINEN FABRIC



714 | LIGHT HERRING BONE FABRIC



712 | HERRING BONE FABRIC



707 | MESH FABRIC



705 | LINEN FABRIC



WOODEN SERIES

A slider shutter wardrobe having combination of wooden inside and OFF WHITE outside.

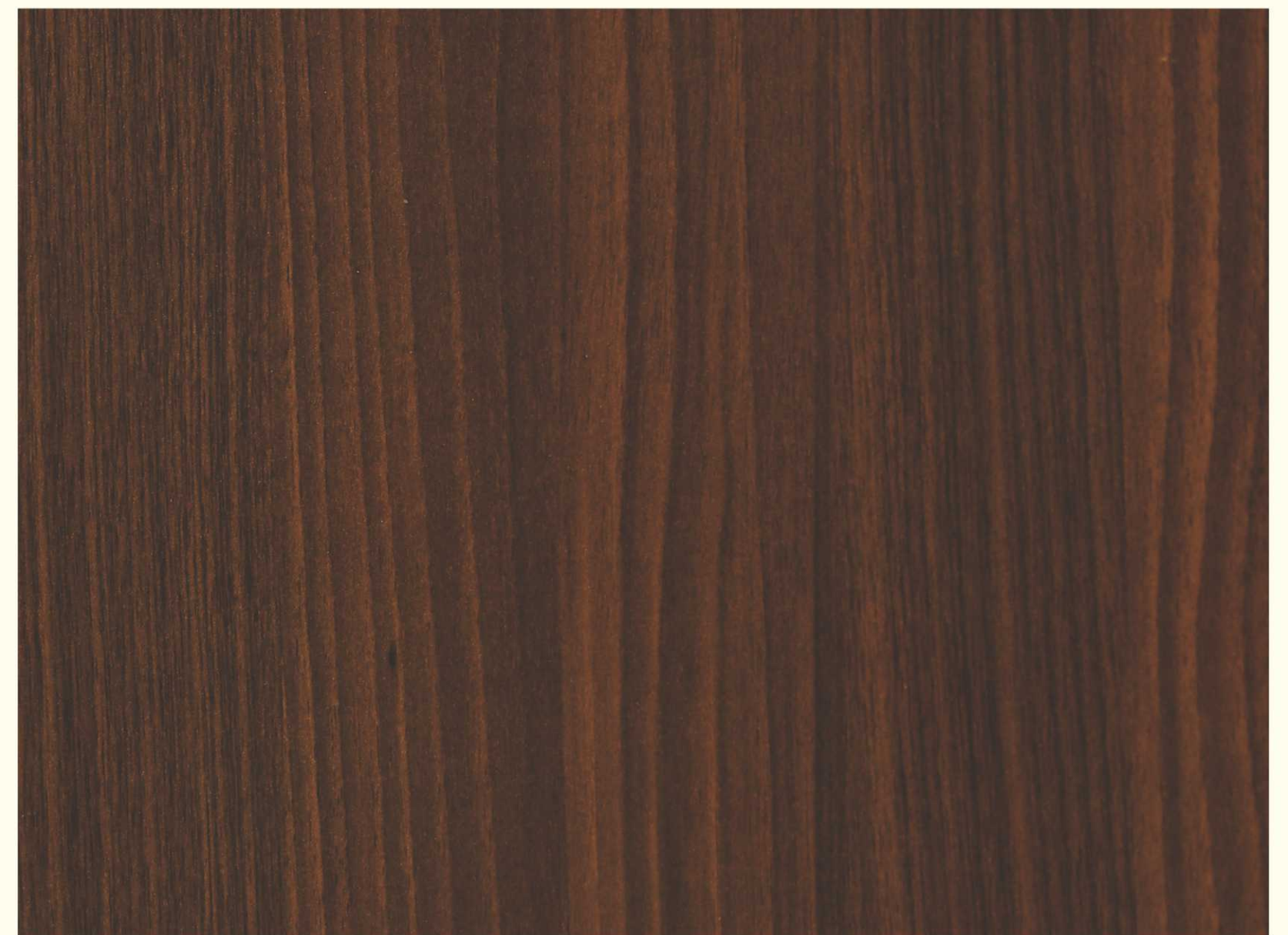


A 805 | BRAZILIAN WALNUT **B** 718 | GREY PG. 11

SERIES : 800



807 | BRENT WOOD

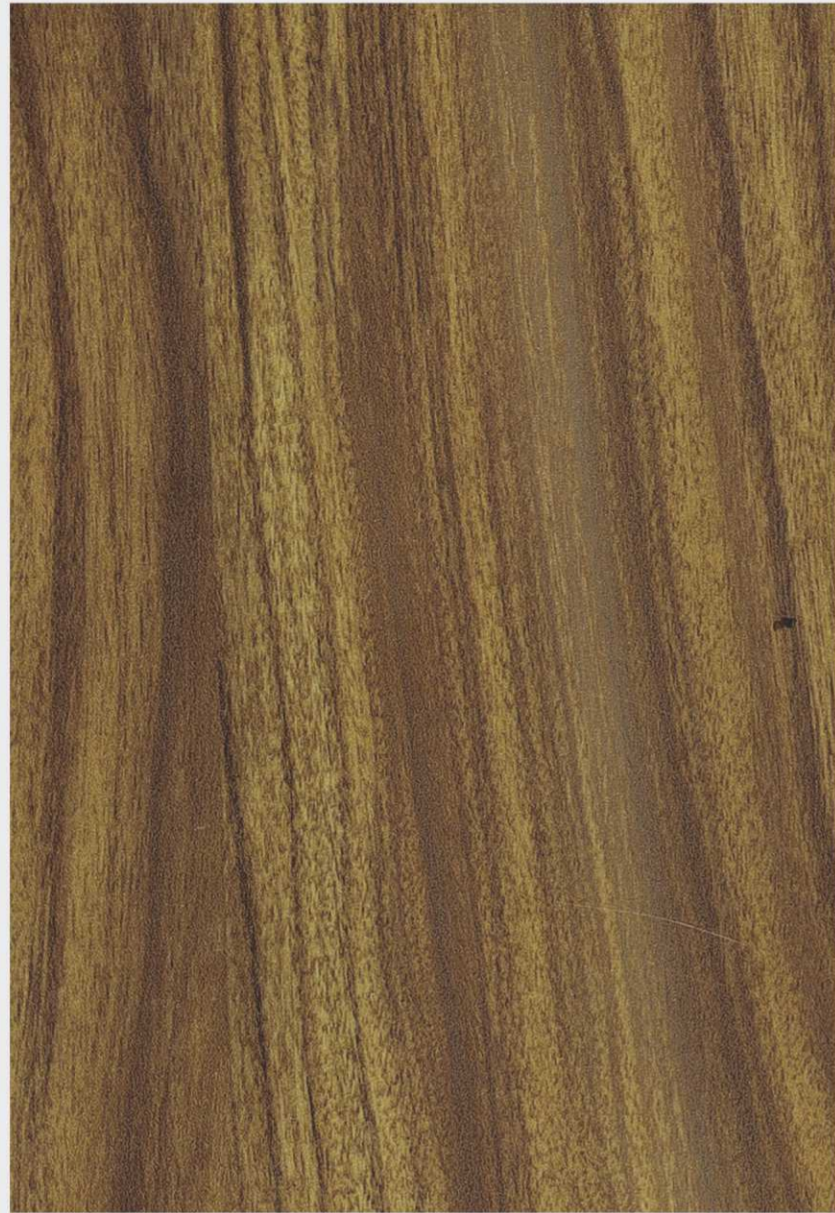


805 | BRAZILIAN WALNUT

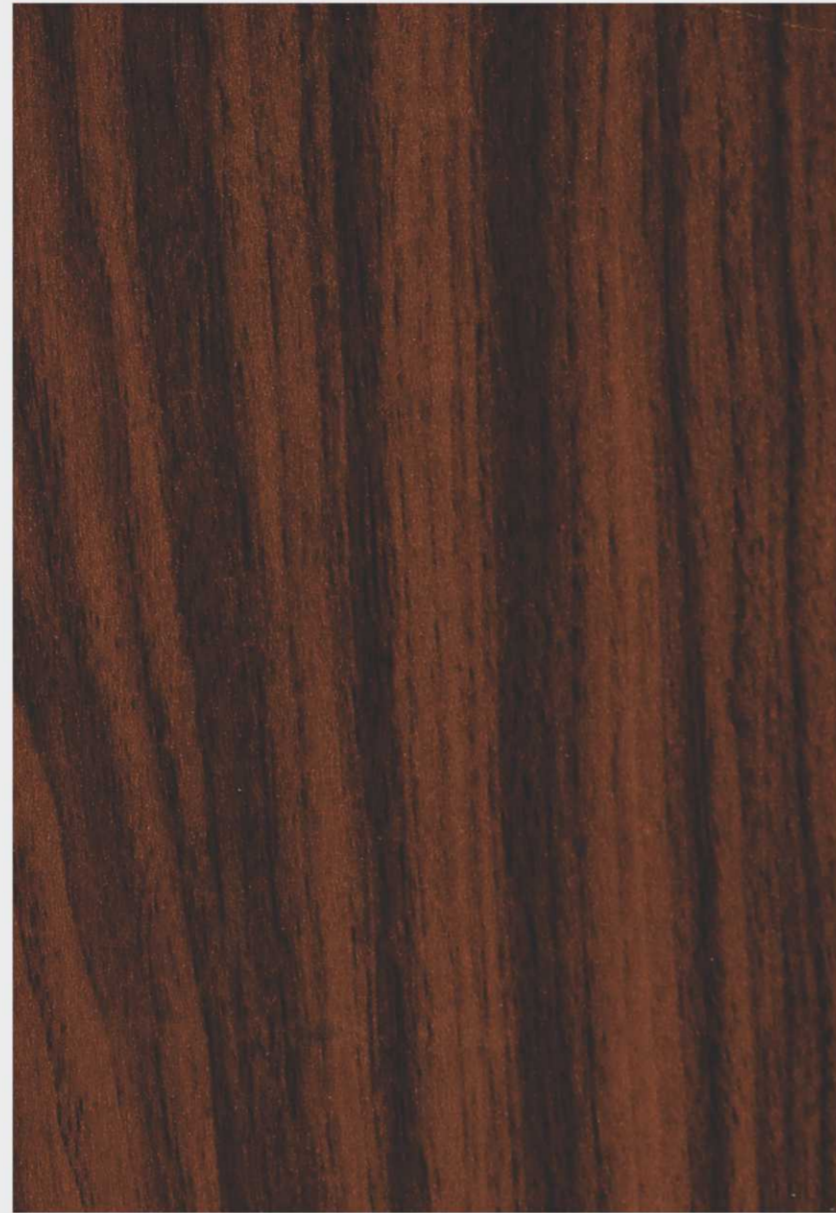


AVAILABLE : FINISH (GL, MT, SF) | THICKNESS : 0.72, 0.82 & 0.92 MM

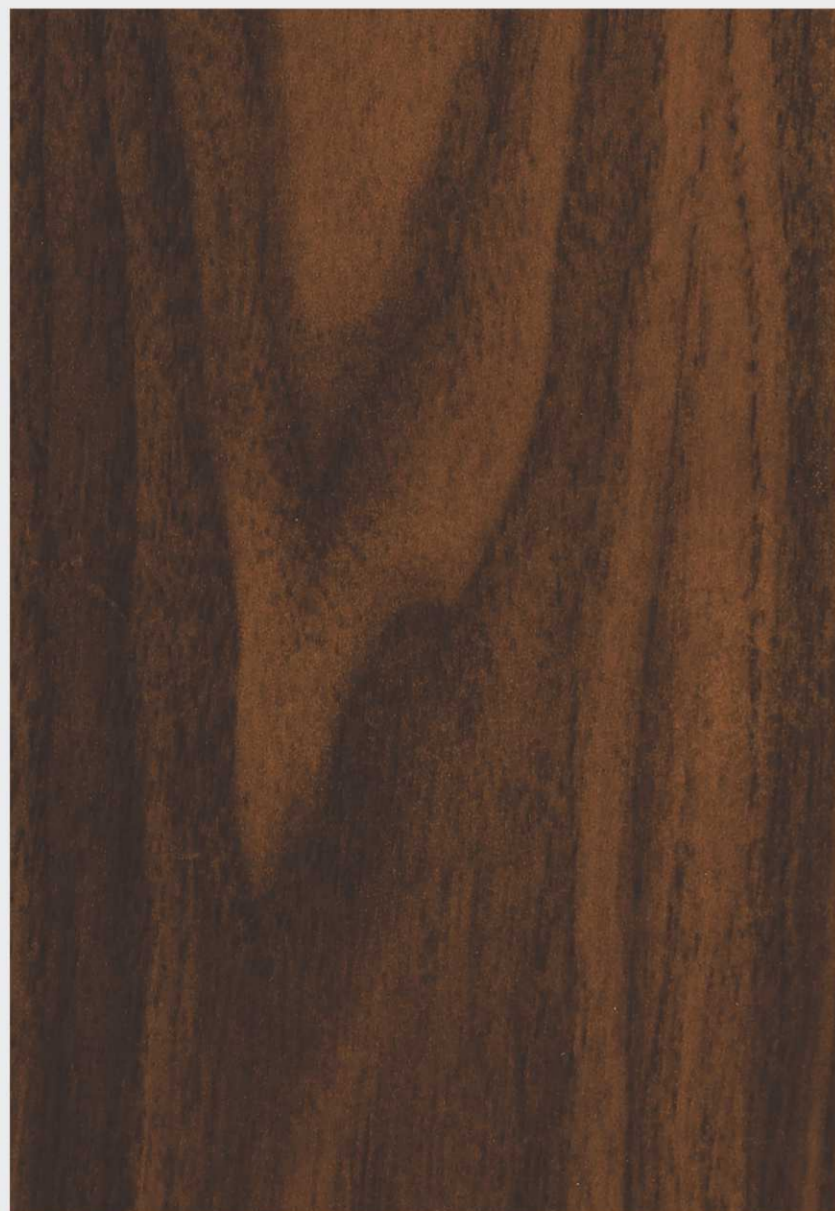
WOODEN SERIES 800



813 | BUCOLIC OAK



811 | ALMOND WALNUT



808 | CARAMEL WALNUT



818 | SOFT WOOD



A 813 | BUCOLIC OAK **B** 708 | COTTON FABRIC PG. 16



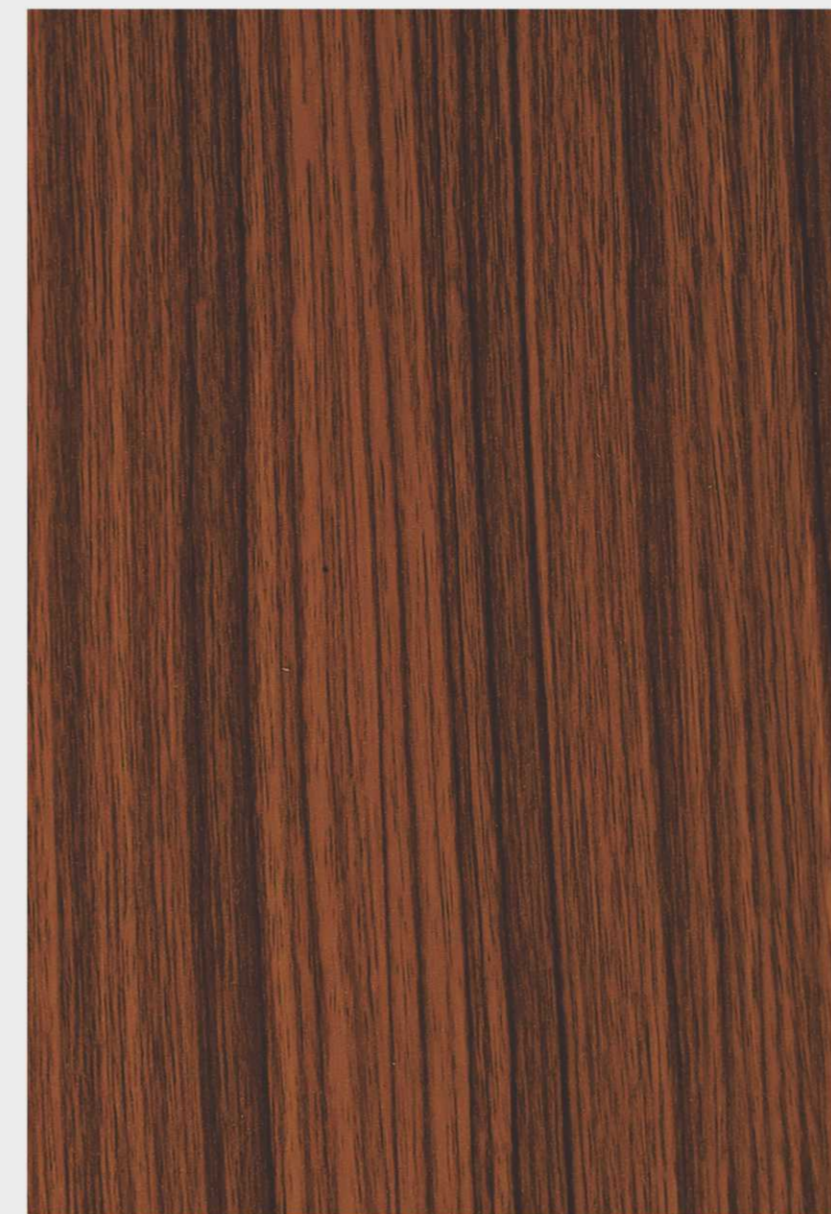
819 | ST WENGE



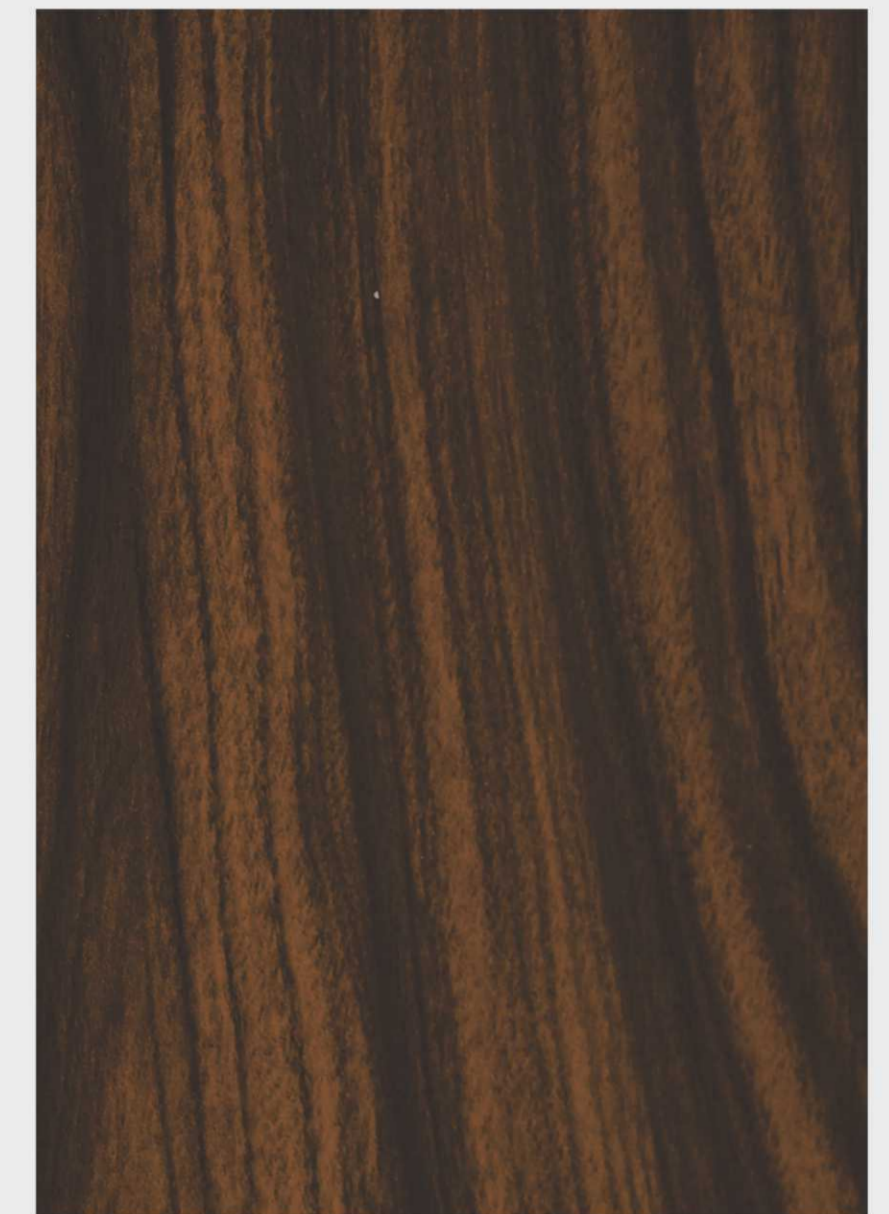
820 | CHY WANGE



WOODEN SERIES 800



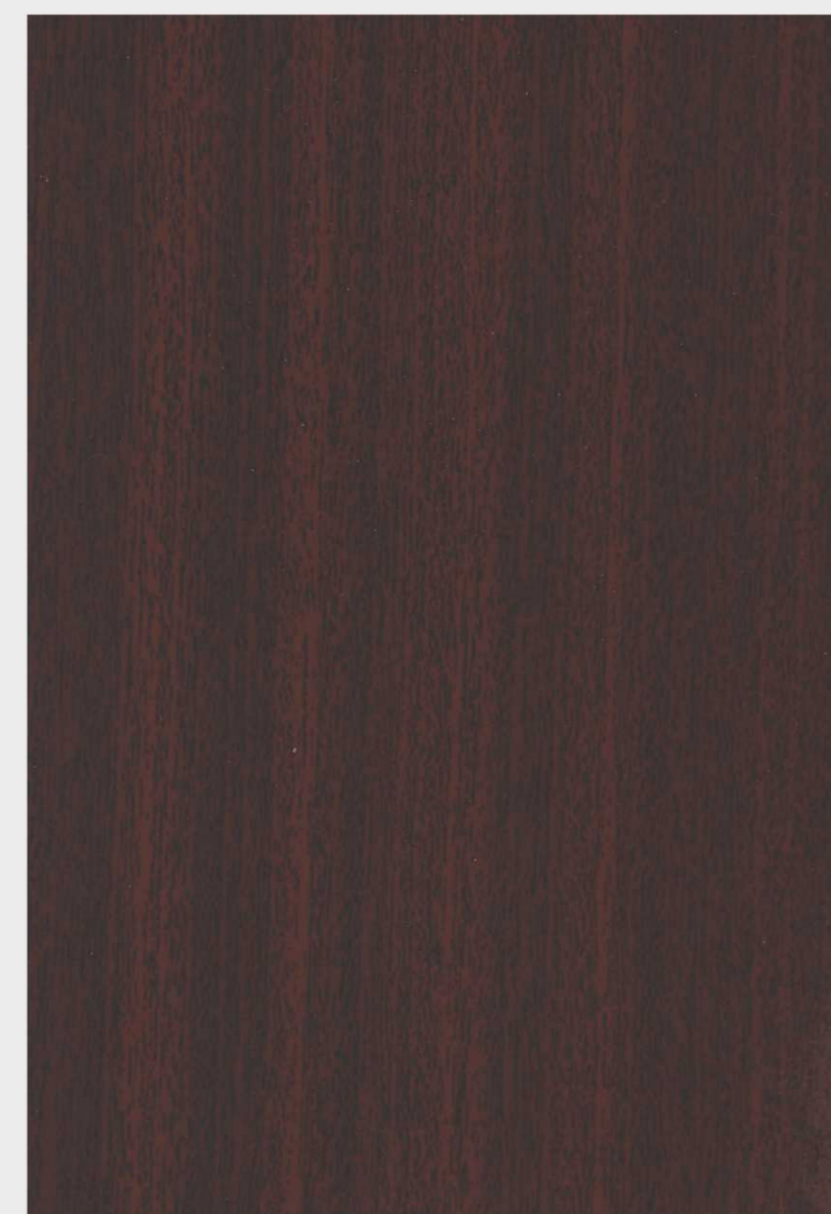
817 | UNIQUE WOOD



814 | CHALET WOOD



- A** 806 | STEEM BEECH
- B** 817 | UNIQUE WOOD
- C** 819 | ST WENGE PG. 22



816 | SAPELLE



806 | STEEM BEECH

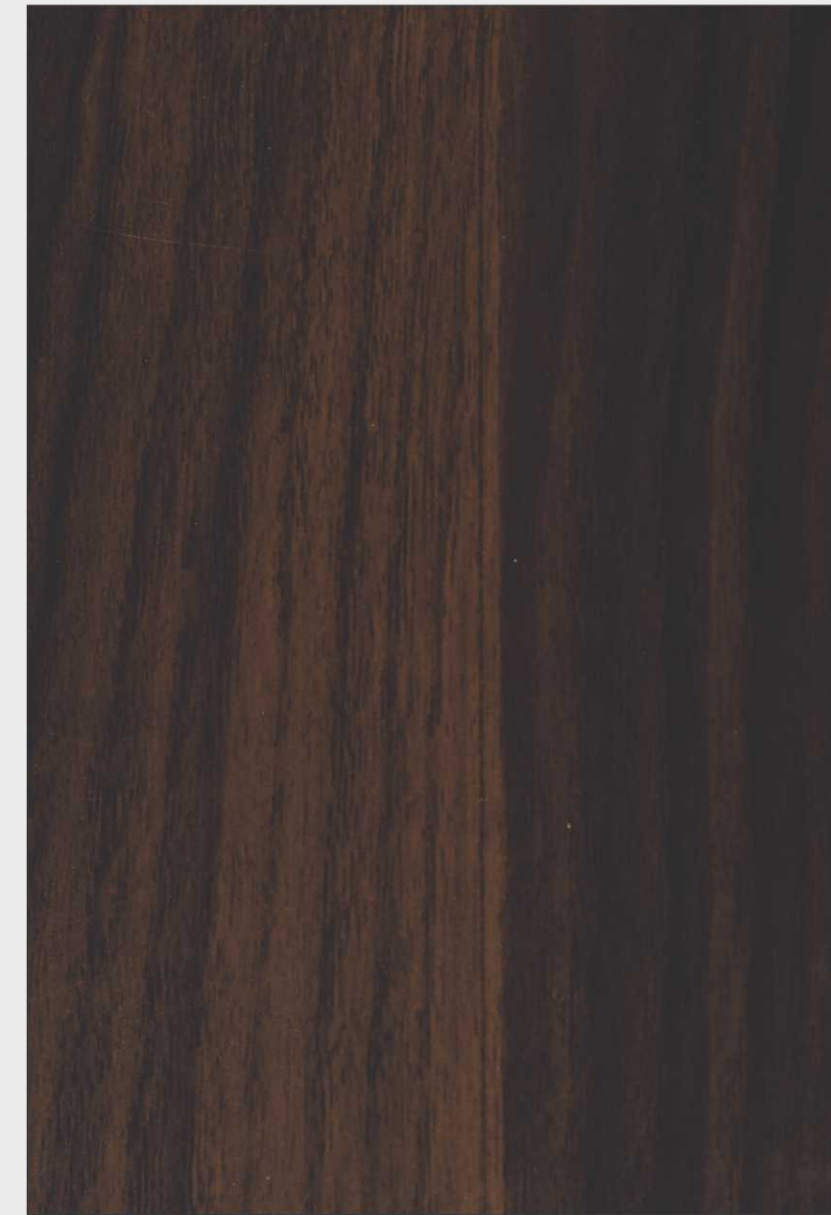


AVAILABLE : FINISH (GL, MT, SF) | THICKNESS : 0.72, 0.82 & 0.92 MM

WOODEN SERIES 800



A 804 | BAVERIAN BEECH **B** 815 | ROSE WOOD



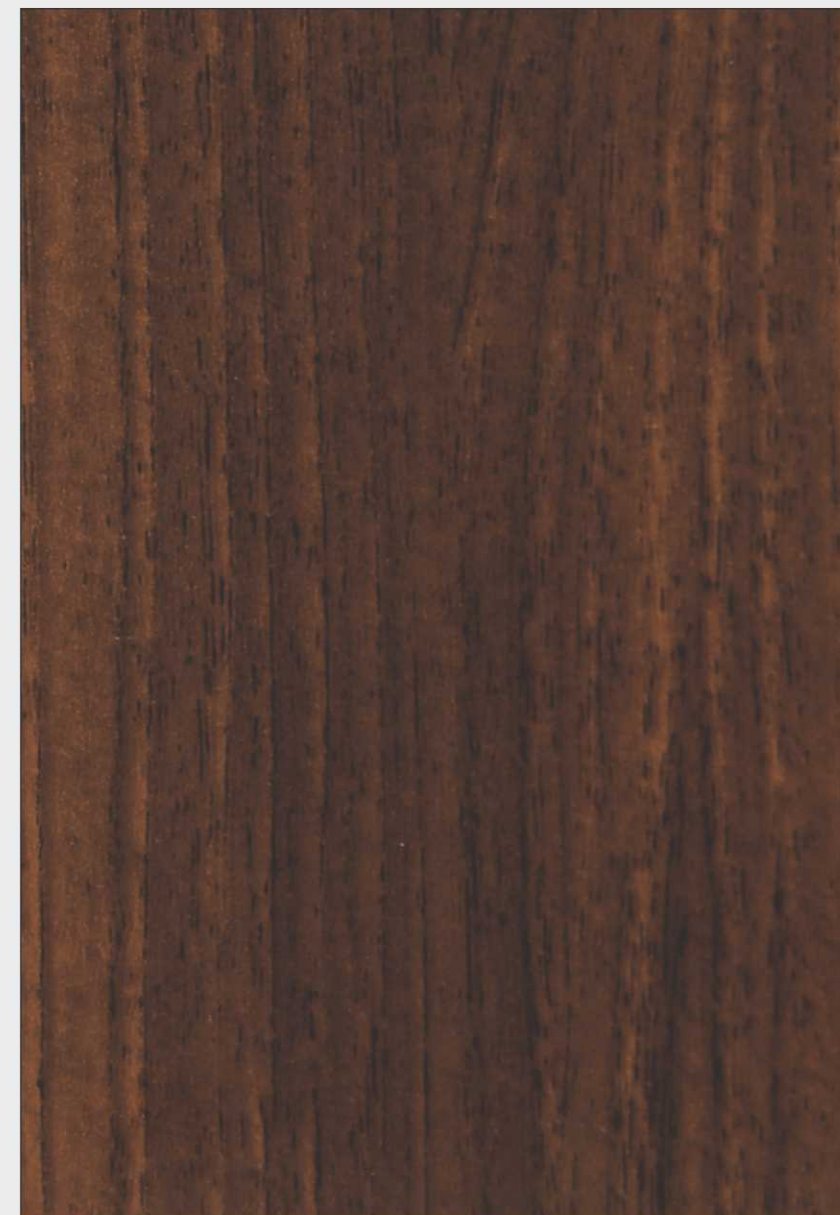
810 | KONTIO WOOD



804 | BAVERIAN BEECH



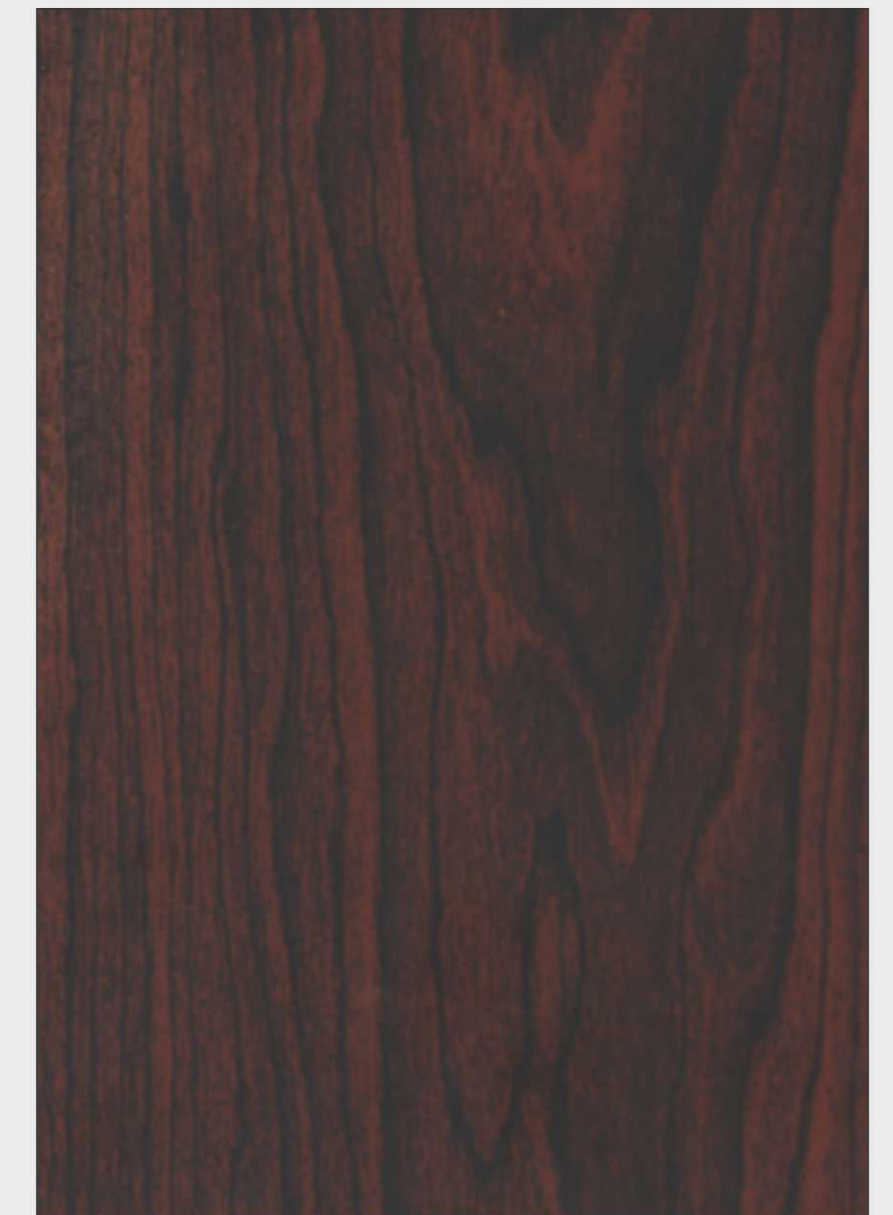
809 | GAINT WOOD



812 | CARISMA WOOD



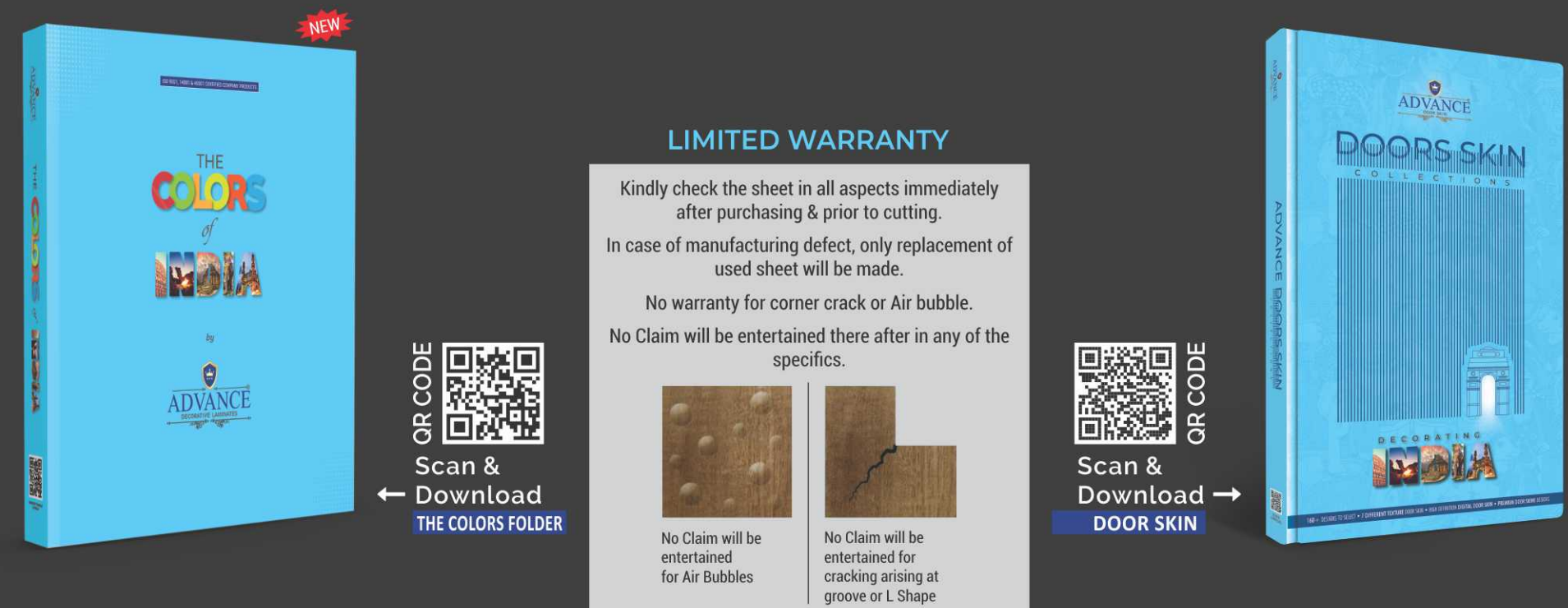
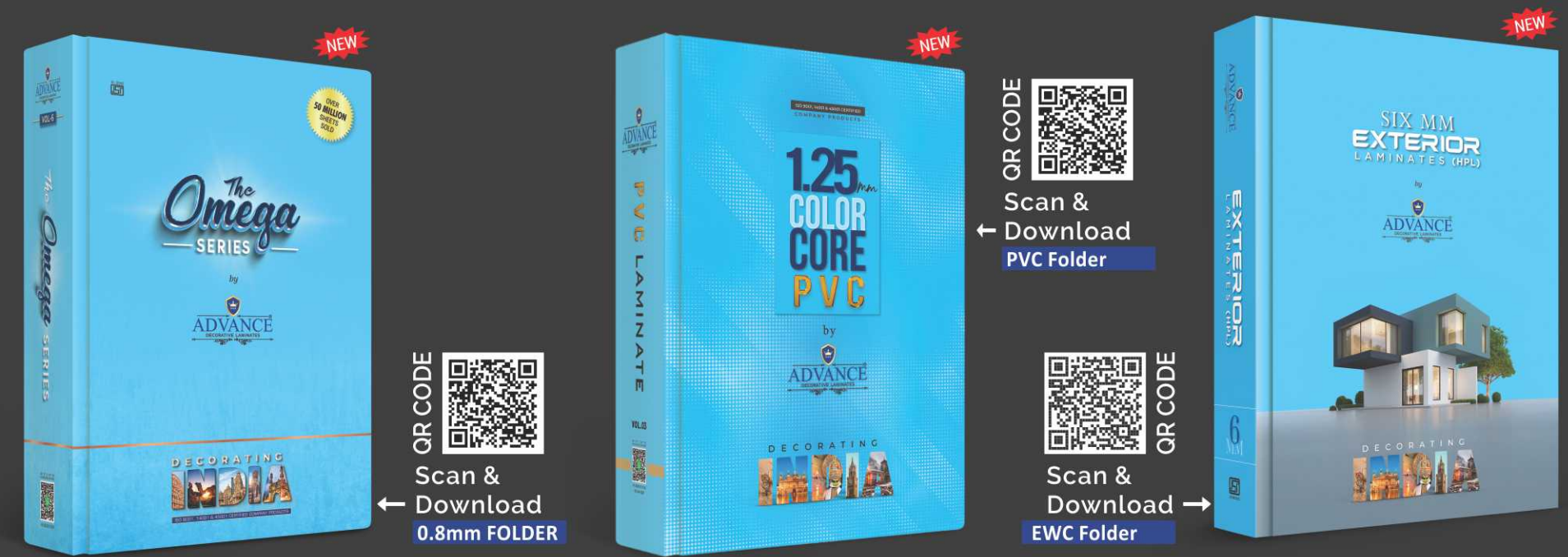
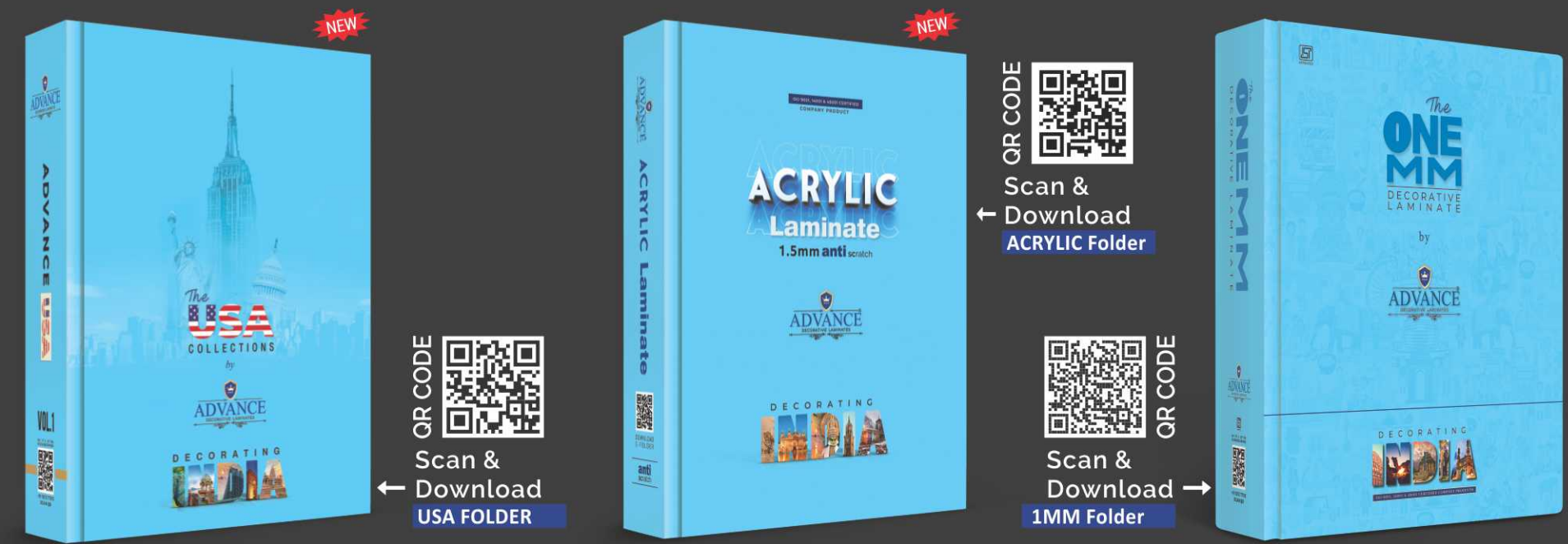
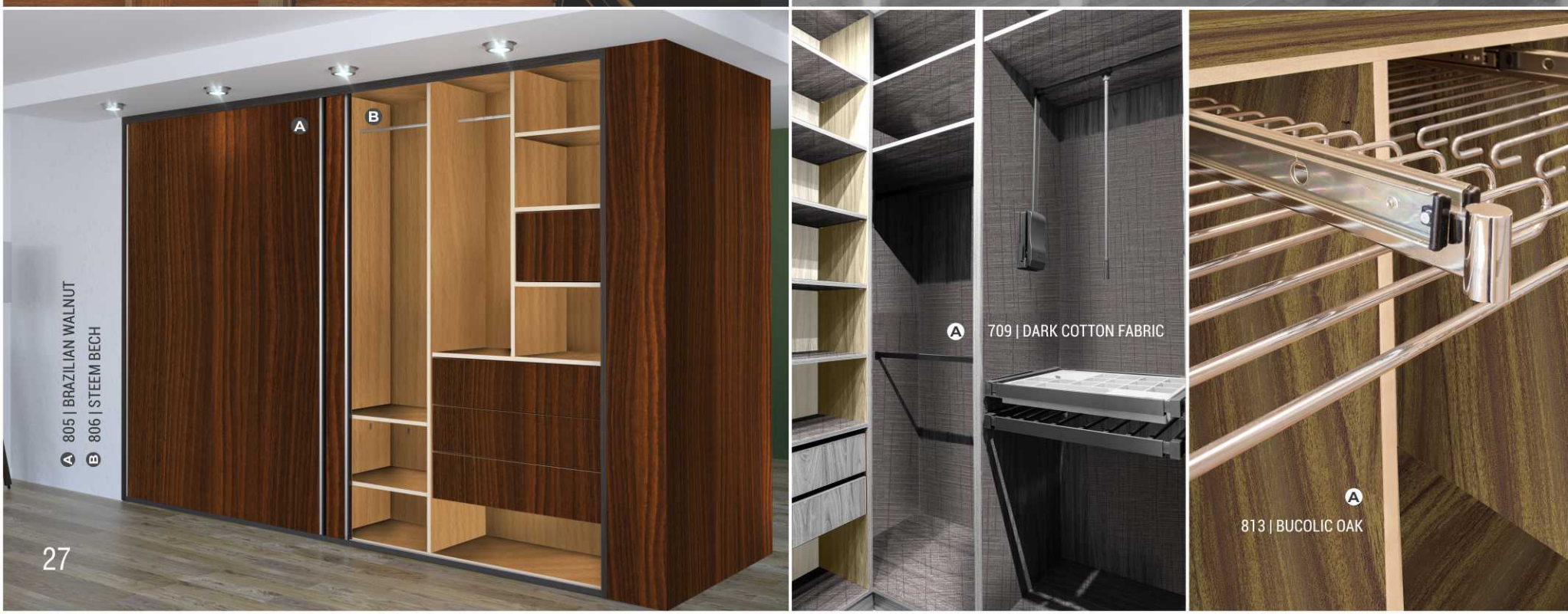
803 | HILAND PINE



815 | ROSE WOOD



India's Most Favourite Decorative Collections



(Company warrants that all its products are free from manufacturing defects and perfectly fit for use under normal conditions. In case of any claims, the liability of the Company is however limited to the cost of the product only.)

Note : This folder is only for product promotion and it is not made for sale.